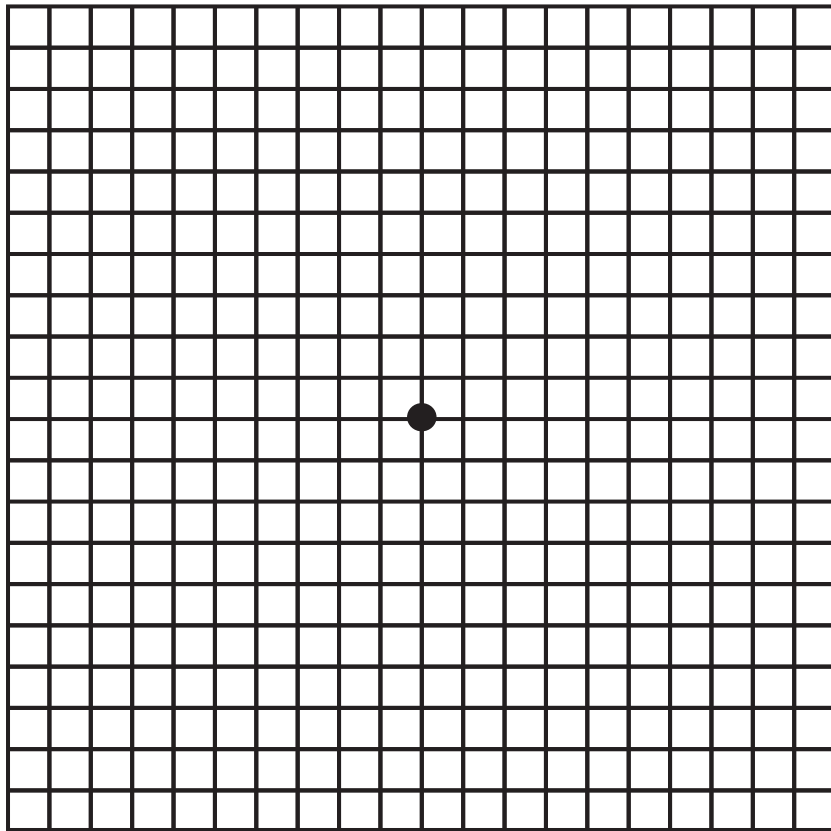


AMSLER GRID

Instructions:

1. Wear your reading glasses.
2. Use good light.
3. Observe the grid with only one eye.
4. Look at the central dot while observing, at the same time, the entire chart and details of the grid.
5. Report any changes or abnormalities to your eye doctor.

Your Testing Grid



Abnormalities include any wavy lines, distortions or missing areas of the grid.



The Eye Associates

866-865-2020 Sight4Life.com

Bradenton | Sarasota | Venice | Ellenton | Sun City Center